

Big Or Small, Fire Safety Is For All.



MANXPOWER[®]
Industrial And Fire Safety Products



TAIWAN
HOSE CLAMPS

DRAGON
TEFLON TAPE

ABOUT US

Manx Impex, an ISO 9001:2015 certified company, established in 2015 is a partnership firm located in the heart of Delhi. We have earned an excellent name as a firm since we have started, and our drive to serve our customers helps us achieve greater heights every day.

We supply/distribute our products to numerous businesses as well as customers in different parts of India, and we are constantly trying to increase our supply.

OUR PRESENCE



WHY US

Our aim remains to provide cutting-edge technologies and innovative solutions for saving assets, property & business. With every product sold we aim to add value!

INDUSTRIES WE SERVE



Home/Residential Societies



Automobiles



Hospitals



Schools/Colleges/
Educational



Movie halls/cinema



Construction



Agriculture



Factories/Industries/
Institutes



Offices/Corporate Buildings



Data Centres/
Electrical Rooms



Market Complexes



Hotels/Hospitality/
Restaurant

OUR CERTIFICATES



MICRO, SMALL & MEDIUM ENTERPRISES
सूक्ष्म, लघु एवं मध्यम उद्यम

OUR STRENGTH • हमारी शक्ति

Ministry of MSME, Govt. of India



9001:2015



LISTED

MEMBER OF



Fire & Security
Association of India

CONTENTS



01

Hose
Pipe

02

Hose
Clamps

03

Coupling And
Branch Pipe

04

Hydrant Valves And
Accessories

05

Fire Hose Reel Drum
& Accessories

06 Fire
Extinguisher

07 Fire Extinguisher
Accessories

08 Fire Extinguisher
Agents

09 Fire
Sprinkler

10 PTFE Teflon
Tape

11 Conventional
Fire Alarm System

12 Standalone Alarm
Systems



01

Hose Pipe

Thermoplastic Fire Hose



- ISI marked (IS:12585)
- Available in Red and Black colour.
- Non-crackable
- Both ends sealed for puncture-free test
- Kink, Abrasion & Flame Resistant
- Excellent Pressure Sustainability
- Anti Ageing & Non-Corrosive
- Puncture & Crush Resistant
- Non-sticky even in hot weather
- Aesthetically Appealing
- Recyclable, so Eco-friendly
- Lightweight – easy to use
- Lesser load on Hose Reel Drum

PVC Steel Wire Reinforced Hose



- Tube: Strong very flexible and smooth, non tox, transparent PVC hose
- Reinforcement: Shock resistant galvanised steel spiral wire Working
- Working Temp: -5 to 65 degree celsius
- Widely used in Industrial, Construction and Environmental protection equipment, Civil Engineering, Wharf, Oil Depot, Sanitation lines and other fields.
- Used for drawing and conveying water, oil, powder, granules and many more purposes.

Non-Percolating Flexible Fire Hose Type 3/ Type B



- SIZE: 63MM
- Type 3/Type B
- Available with and without coupling
- Available in 7.5, 15, 30 meters
- Available with SS, Aluminium or Gunmetal Coupling
- ISI Approved IS 636
- Material: Rubberized Fabric Reinforced Rubber lined (RRL) – Elastomeric Outer Covering
- Workability: Can work at certified pressures as lab-tested on calibrated machines

Manxpower Red Hose



- Application- Used for agriculture and used in chemical industries, mines, factories and much more
- Heavy duty industrial use ▪ Color: Red
- Working Pressure: 6 Bar ▪ Size :2.5" & 3"

Non-Percolating Flexible Fire Hose Type 1/ Type A



- Size: 63MM
- Type 1/Type A
- Available with and without coupling
- Available in 7.5, 15, 30 meters
- Available with SS, Aluminium or Gunmetal Coupling
- ISI Approved IS 636
- Rubberized Fabric Reinforced Rubber lined (RRL) Woven-Jacketed

Manxpower Canvas Hose



- Used for water delivery purposes in Agriculture, Chemical Industries, Mines, Factories and much more.
- Outside Jacket made of
- Polyester yarn and Synthetic yarn;
- Available in sizes ID: 1"-10"
- Working Pressure: 6-8 Bar; 8-10 Bar; 13 Bar

02

Hose Clamp

Hose clamps are devices used to attach and seal a hose onto a fitting such as a barb or nipple. They come in various types and sizes and are commonly used in a variety of applications across different industries.

Types of Hose Clamps

1. Worm Gear Clamps (Screw Clamps): These have a helical-threaded screw that, when turned, tightens the clamp.
2. Spring Clamps: Made from spring steel, these clamps maintain constant pressure on a hose when used over a fitting.
3. Wire Clamps: Constructed from a piece of wire bent into a loop and tightened with a screw, these are used for lightweight applications.
4. Ear Clamps (O-Clamps): These have one or more ears that are crimped to provide a secure fit.
5. T-Bolt Clamps: Provide a more consistent and higher clamping force, suitable for high-pressure applications.

Applications of Hose Clamps

1. Automotive Industry: Used to secure hoses in the cooling system, fuel lines, air intake systems, and vacuum lines.
2. Plumbing: Used in household plumbing systems to secure hoses and pipes, especially in washing machines and dishwashers.
3. Agriculture: Used in irrigation systems to secure hoses and pipes, ensuring a leak-free connection.
4. Marine: Essential in boats for securing hoses in fuel lines, bilge pumps, and cooling systems.
5. Industrial: Used in various machinery to secure hoses that carry air, fluids, or gases.
6. Home Applications: Commonly used in DIY projects, gardening equipment, and for securing household appliances.

How Hose Clamps Work

Hose clamps work by applying uniform pressure around the hose to hold it tightly against a fitting, preventing any fluid or air leakage. The method of tightening varies by clamp type but generally involves turning a screw or crimping the clamp to achieve a secure fit.

When selecting a hose clamp, consider:

- Size: It should fit the hose diameter.
- Material: Stainless steel for corrosion resistance, galvanized steel for general use.
- Pressure: Ensure the clamp can handle the pressure of the fluid or air in the hose.
- Environment: Consider exposure to elements, chemicals, and temperature variations.

By selecting the appropriate type and size, hose clamps ensure a secure and leak-free connection in various systems and applications.



Double Wire Hose Clamp



Double Wire Hose Clamp



Spring Hose Clamp



Butterfly Hose Clamp



German Type Hose Clamp



Nut Bolt Hose Clamp



Butterfly Hose Clamp



German Type Hose Clamp



Heavy Duty Hose Clamp



Pneumatic Hose Clamp



Heavy Duty Hose Clamp



Hanger Hose Clamp



Taiwan Hose Clamp

03

Coupling And Branch Pipe

Fire Hose Branch Pipe With Nozzle



- Available Material: Aluminium; Stainless Steel; Gunmetal
- Size: 63mm (2.5")
- ISI Approved IS 903
- Hydraulic Test: 21 Kg/cm²
- Finish: Natural Polished

Fire Hose Coupling



- Available Material: Aluminium; Stainless Steel; Gunmetal
- Size: 63mm (2.5")
- ISI Approved IS 903
- Hydraulic Test: 21 Kg/cm²
- Finish: Natural Polished

04

Hydrant Valves & Accessories

Single Head Landing Valve



- Landing Valves are used to be mounted in Fire Hydrant System For Internal or External places.
- Material: Stainless Steel Material; Gun Metal
- ISI Approved Type-A, IS:5290; Size:63mm female outlet
- Tested at 21 kgf/cm²

Stainless Steel Adaptor



- Material: Stainless Steel
- Adaptor for 63mm Landing Valves
- Brand: MANXPOWER
- Tested at 21 kgf/cm²

Four Way Breeching Inlet



- Brand: MANXPOWER
- Body: Cast Iron
- NRV: Stainless Steel
- Test Pressure: 21 kgf/cm²
- Inlet: 4 X 63mm NRV Male Instantaneous

Two Way Breeching Inlet



- Brand: MANXPOWER
- Body: Cast Iron
- NRV: Stainless Steel
- Test Pressure: 21 kgf/cm²
- Inlet: 2 X 63mm NRV Male Instantaneous

05

Fire Hose Reel Drum & Accessories

Fire Hose Reel Drum



- MANXPOWER Fire Hose Reel Drum
- Two-piece
- Suitable for 19/20 MM Hose
- Manual swing fire hose reel
- Corrosion-free waterways
- High Quality; ISO, CE Certified

Malaysian Type Drum



- MANXPOWER Fire Hose Reel Drum
- Malaysian Type
- Aluminium alloy, Corrosion-free waterways
- Suitable for 19/20 MM Hose
- Manual swing fire hose reel
- High Quality; ISO, CE, BS EN 671-1 Certified

Manxpower PVC Shut Off Nozzle



- MANXPOWER PVC Shut Off Nozzle
- Suitable for 19/20 MM Hose
- Corrosion Free
- High Quality; CE, ISO Certified
- Leak Proof



Fire Extinguishers

a range of types to keep you safe

We offer an extensive range of extinguishers, from general purpose fire extinguishers to specific applications. Each extinguisher is checked and approved before installation and is regularly inspected by our experienced technicians.

06

Fire Extinguisher

ABC Type Fire Extinguisher



- ABC Type Fire Extinguisher (Stored Pressure)
- Filled with MAP 50 ABC Dry Chemical Powder
- Portable Fire Extinguisher, Easy to use and refillable
- Suitable for class A, B, C and Electrically Started Fire
- ISI Approved as per IS 15683, ISO, CE Approved
- Min. Discharge Time: 8 Seconds
- Working Temperature: -10 to 60 degrees Celsius
- Available in sizes: 1, 2, 4, 6, 9kg

CO2 Fire Extinguisher



- Co2 Type Fire Extinguisher (Stored Pressure)
- Filled with Carbon Dioxide
- Portable fire extinguisher
- Easy to use; Suitable for class B, C and electrically started Fire
- ISI Approved as per IS 15683, PESO, CE, ISO Approved
- min. discharge time: 8 Seconds
- Working Temperature: -10 to 60 degrees Celsius
- Available in Sizes: 2 kg, 4.5 kg

AFFF Foam Fire Extinguisher



- AFFF Foam Based Fire Extinguisher (Stored Pressure)
- Filled with Mechanical AFFF Foam
- Min. Discharge time: 8 seconds
- Working Temperature: 5 to 60 degree celsius
- Available in 9 liter
- Foam Fire Extinguishers are useful for Class 'A' & Class 'B' fires involving flammable liquids such as Paints, Solvents and fats like Grease and Oils. It contains Aqueous Film Forming Foam (AFFF) compound. The foam smothers the flames and forms a compact blanket over the fire, preventing it from spreading or re-igniting

500gm ABC Type Fire Extinguisher



- 500 GM fire extinguisher
- Filled with MAP 50 ABC Dry Chemical powder
- Stored pressure
- ABC Dry Chemical Powder
- ISO, CE Approved
- Portable Fire Extinguisher
- Easy to use, refillable; Effective against class A, B,C & electrically started fires;
- Easy to store with wall mount bracket.
- High quality.

Fire Extinguisher Ball



- MANXPOWER Brand
- 1.3 kg ABC powder used
- Filled with MAP 90 ABC powder
- Diameter 150mm
- Activation time : 3-5 seconds approx.
- Effective Area: 3 cubic meters approx.
- Light weight
- Easy to use
- Human and Environment friendly
- No maintenance required
- 5yrs Shelf Life

Water Based Fire Extinguisher



- Water-based extinguishers harness the power of water to extinguish fires. It is the most effective extinguishing agent against fires in solid objects such as wood. Such fires remain hidden deep within the objects, increasing in temperature till they cause the surrounding material to spontaneously ignite.
- Soft water-based fire extinguisher (stored pressure)
- Portable fire extinguisher
- Easy to use
- Min. discharge time: 8 seconds
- Working temperature: 5 to 60 degrees celsius
- Available in 9 litre

Fire Blanket



- Brand: MANXPOWER
- Size: 1x2m
- Excellent flame retardant property
- Easy to carry and use
- Environment friendly, cause no secondary pollution after use
- No expiry date, can be used multiple times if there is no damage

07

Fire Extinguisher Accessories

ABC Valve



- ABC Valve for Fire extinguisher
- Brass Body
- Neck ring size M30X1.5
- Available in Black Color

ABC Valve Small Handle



- Small Handle ABC Valve for Fire extinguisher
- Brass Body
- Neck ring size M30X1.5
- Available in Black Color

Fire Extinguisher Empty Body



- High quality Powder Coated Fire Extinguisher Empty Body
- Available in sizes: 0.5kg, 1 kg, 2 kg, 4 kg, 6kg, 9kg
- Pressure Tested

Syphon Tube



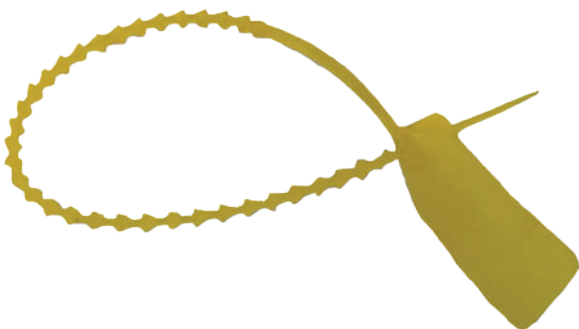
- Fire Extinguisher Syphon tube available for 0.5, 1, 2, 4, 6, 9kg
- Fire Extinguishers ensures smooth flow of ABC Powder

Fire Extinguisher Belt



- Fire Extinguisher Belt for 4 Kg, 6 Kg, 9Kg Fire Extinguisher

Plastic Seal For Fire Extinguisher



- Plastic seal for fire extinguisher; made with high quality PVC granules



Spring Pressure Gauge



37mm Spring Pressure Gauge



Diaphragm Pressure Gauge



Fire Extinguisher Discharge Hose



CE ABC Valve



Modular Valve

08

Fire Extinguisher Agents

ABC Dry Chemical Powder (25kg)



- ABC Dry Chemical Powder
- Mono Ammonium Phosphate-based powders are multipurpose and are generally used for Class A B C and Electrically started Fires
- Packing: 25kgs Bag
- Available in MAP 30, 50, 90
- CE Certified

09

Fire Sprinkler

Pendent Type Fire Sprinkler



- Size: 1/2"
- 57, 68, 79 Degree Bulb
- Standard Response
- Chrome Plated, Available in Zinc Alloy, brass.

Sidewall Type Fire Sprinkler



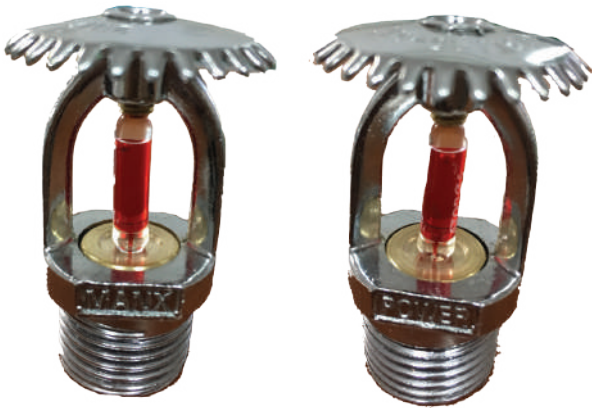
- Size: 1/2"
- 57, 68, 79 Degree Bulb
- Standard Response
- Chrome Plated, Available in Zinc Alloy and Brass

Flexible Sprinkler Hose



- UL Listed
- MANXPOWER Brand
- Braided and Unbraided Flexible hoses available
- Available in size 700mm, 1000mm, 1200mm, 1500mm, 1800mm

Upright Type Fire Sprinkler



- Brand: MANXPOWER ▪ Size: 1/2"
- 68 Degree Bulb
- Standard Response
- Chrome Plated, Available in Zinc Alloy
- Material: Zinc

Concealed Type Fire Sprinkler



- Brand: MANXPOWER
- Material: Brass
- Temperature: 68° C
- Size: 1/2"
- Pack of 100 pcs

Medium Velocity Nozzle



- Brand: MANXPOWER
- Size: 1/2"
- K Factor-30
- Chrome Plated
- Material: Brass

10

PTFE Teflon Tape

PTFE Teflon Tape



- Width: 12mm and 19mm
- Length: 10 meters
- Thickness: 0.075mm
- Brand: MANXPOWER
- Available in Yellow and White Color

PTFE Teflon Tape (8METER)



- Width: 12mm
- Length: 8 meters
- Thickness: 0.075mm
- Brand: Dragon
- Available in Yellow and White Color

PTFE Teflon Tape (12METER)



- Width: 12mm
- Length: 12 meters
- Thickness: 0.075mm
- Brand: Dragon
- Available in White Color

PTFE Teflon Tape (10METER)



- Width: 12mm
- Length: 10 meters
- Thickness: 0.1mm
- Brand: Dragon
- Available in White Color

11

Conventional Fire Alarm System

Smoke Detector



- Model: FA-502 | FA-505
- Working Voltage: 24VDC
- Max. Current: 1A @24VDC
- Contact Resistance: $\leq 0.02\text{ohm}$
- Working Conditions: Temp. $-10\sim+65^{\circ}\text{C}$
- Humidity: 10%~90%RH

Heat Detector



- Input Voltage: DC 10-32V
- Static Current: $\leq 70\mu\text{A}$
- Alarm Current: $\geq 30\text{mA}$
- Operating Temperature: $0^{\circ}\text{C}\sim +55^{\circ}\text{C}$
- Alarm Reset: Power off/ Auto reset
- Wire Mode: 2-wire/ 3-wire/ 4-wire
- Installation Method: Ceiling mounted
- Operating Humidity: $\leq 90\% \text{RH}$
- LED Frequency: Once per 5 seconds
- Alarm Output: LED indication, Network Output
- Alarm Temp.: $8-15^{\circ}\text{C}/\text{min}$ (Rate-of-rise)
- Alarm Temp.: $8-15^{\circ}\text{C}/\text{min}$ (Rate-of-rise)
- Activation Temperature: $57 \pm 3^{\circ}\text{C}$ (Fixed)

Multi Detector



- Input Voltage: DC 12-35V
- Static Current: $\leq 50\mu\text{A}$ (DC 12-35V)
- Alarm Current: $\leq 30\text{mA}$
- Operating Temperature: $0^{\circ}\text{C} \sim +55^{\circ}\text{C}$
- Operating Humidity: 10% -95%RH (Non coagulating)
- Detecting Sensitivity: $m=0.15\text{dB/m}$ (Cotton wicks smoldering test)
- Alarm Temperature: $57^{\circ}\text{C}/137\text{F}$ or $8-15^{\circ}\text{C}/\text{Min}$ (Rate Of Rise)
- Max. Electrify Capacitance: $0.03\mu\text{F}$
- Electrify Time: $\leq 60\text{s}$
- Alarm Reset: Auto reset (Power off reset $\leq 0.5\text{s}$ optional)
- Installation: Ceiling Mounted
- Detecting Area: 60m^2 (with 4 meter height)

Fire Strobe Siren



- Temp Range: $-10 \sim +50^{\circ}\text{C}$
- Humidity Range: $\leq 95\%RH$
- Operating Voltage: DC12/24V
- Working Current: $90 \sim 130\text{mA}$
- Flash Intensity: Temp. $\geq 1.2\text{WS}$
- Flash Period: $\leq 1\text{S}$
- Audio Alarm: $90 \sim 105\text{dB}$
- Life Of Flash Light: ≥ 100000 Time
- Provenience Of Sound Alarm: Fire Engine Souna
- Dimension: $125*125*50\text{mm}$

Fire Alarm Panels



- Available in 2 zone, 4 zone, 8 zone, 10 zone, 12 zone, 16 zone
- 16 X 2 Dot Matrix LCD Display.
- Standby battery backup with built in charging.
- Fire / Fault status in unambiguous colored LED indication.
- Switch Mode Power Supply.
- Tactile Keypad for easy panel operation.
- System ON indication.
- Main, Standby status indication.
- Low Battery visual warning.
- Relay output for actuators, for Fire and Fault.
- Lamp Test facility.
- Zone wise one man Walk Test Facility.
- Zone wise Isolation facility with loop voltage cut off.
- Compatible to all type of Conventional Detectors.
- Zone wise and common hooter facility.
- Supports external auto dialer.
- Fuse protection available (AC 230v, battery output, mother board).

Fire Strobe Siren Economy



- Input Voltage: 12/24 VDC
- Standard Current: <50ma
- Sound Pressure: ≥ 100 dB/m
- Operating Temperature: -10°C - -50°C
- Size: 81.5 x 81.5 x 52mm

Manual Call Point



- Model: MP-FA105
- Operating Voltage: DC 12-24V
- Operating current: 2A
- Withstood voltage: AC250V
- One way/two way
- Transparent Cover
- Colour available red
- Dimension 86*89*56mm

Manual Call Point Eco



- Model:FA-502 | FA-505
- Working Voltage: 24VDC
- Max. Current: 1A @24VDC
- Contact Resistance: $\leq 0.02\text{ohm}$
- Working Conditions: Temp. $-10\sim+65^{\circ}\text{C}$
- Humidity: 10%~90%RH

12

Standalone Alarm System

Standalone Smoke Detector



- Model: YJ-168
- Sensor: Photoelectronic
- Power: DC 9V Battery (battery is included)
- Low Power Indicate: Audiovisual Alarm" 7-15minutes)
- Alarm Sensitivity: 0.1~0.5dB/M
- Alarm Current: $\leq 15\text{mA}$
- Alarm Output: Audiovisual Alarm , 85db/10 feet
- Working Environment: Operation Temperature-1" +55", Operation Humidity: <95%

Standalone Smoke Detector Gold



- Model: YJ-101
- Sensor: Photoelectronic
- Power: DC 2*1.5V AA Battery (batteries are included, 1 year battery life)
- Low Power Indicate: Audiovisual Alarm"7-15minutes
- Alarm Sensitivity: 0.1~0.25dB/M
- Alarm Current: $0 \leq 15\text{mA}$
- Alarm Output: Audiovisual Alarm , 85db/10 feet
- Working Environment: Operation Temperature-10" +55", Operation Humidity: <95%

Standalone Smoke Detector Plus



- Model: YJ-106
- Sensor: Photoelectric
- Power: DC 9V Battery (battery is included, 1 year battery life)
- Low Power Indicate: Audiovisual Alarm"7-15minutes)
- Alarm Sensitivity: 0.1~0.25dB/M
- Alarm Current: $\leq 15\text{mA}$
- Alarm Output: Audiovisual Alarm , 85db/10 feet
- Dimension: 102*46mm

Standalone Smoke Detector Wifi



- Model: YJ-101B-Wifi
- Sensor: Photoelectric
- Power: DC 2*1.5V AA Battery (batteries are included, 1 year battery life)
- Low Power Indicate: Audio-visual Alarm"7-15minutes)
- Alarm Sensitivity: 0.1~0.25dB/M
- Alarm Current: $0 \leq 15\text{mA}$
- Alarm Output: Audio-visual Alarm , 85db/10 feet
- Working Environment: Operation Temperature-10" +55", Operation Humidity: <95%

Gas Detector



- Model: YJ-611
- Voltage: 100-240V AC
- Sensor: Semiconductor Sensor
- Rated Power: 2.5W
- Alarm Output: Audio-visual Alarm
- Sound Level: 85db/10 feet
- Alarm Level: LPG & Natural Gas: 10% \pm 5% LEL
- Dimension: 120*80*35mm


CO Detector



- Model: YJ-812
- Sensor: Electrochemical CO sensor
- Battery Life: 1 year
- Standby Current: \leq 10uA
- Alarm Current: \leq 25mA
- Alarm Output: Audiovisual alarm
- Sound Level: 85db/10 feet
- Alarm Level: 50ppm, alarm within 60-90minutes;
100ppm,alarms within 10-40minutes; 300ppm,
alarms within 3 minutes.



Big or small,
Fire safety is for all.

The background of the entire image is a large, intense fire with bright orange and yellow flames. In the foreground, the silhouettes of two people are visible against the fire. The person on the left is holding a long, thin object, possibly a stick or a tool. The person on the right is standing with their back to the camera. The overall scene is dramatic and high-contrast.

Mobile: +91 74281 15550
Office: +91 11-49872937
Email: info@manximpex.com
Website: manximpex.com

**Address: 3963/9, Ground Floor, City Market, Ajmeri
Gate, Delhi, India 110006**