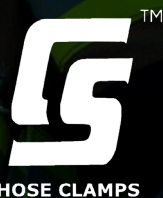


Big Or Small, Fire Safety Is For All.

  
**MANXPOWER**®

Industrial And Fire Safety Products



**DRAGON  
TEFLON TAPE**

**TAIWAN  
HOSE CLAMPS**



## ABOUT US



Estd. 2015



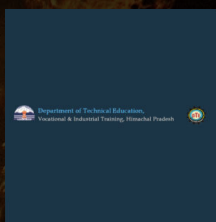
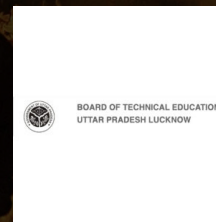
ISO 9001:2015



New Delhi

We have earned an excellent name as a firm since we have started, and our drive to serve our customers helps us achieve greater heights every day. We supply/distribute our products to numerous businesses as well as customers in different parts of India, and we are constantly trying to increase our supply.

## OUR PRESENCE



## WHY US

Our aim remains to provide cutting-edge technologies and innovative solutions for saving assets, property & business. With every product sold we aim to add value!

## INDUSTRIES WE SERVE



Home/Residential  
Societies



Automobiles



Hospitals



Schools/Colleges/  
Educational Institutes



Movie halls/cinema



Construction



Agriculture



Factories/Industries



Hotels/Hospitality/  
Restaurant



Offices/Corporate  
Buildings/Market  
Complexes



Shopping Malls/  
Complexes



Data Centres/  
Electrical Rooms

## OUR CERTIFICATES



Fire & Security  
Association of India



# OUR PRODUCTS

01 HOSE PIPE



02 HOSE CLAMPS



03 COUPLING & BRANCH PIPE



04 HYDRANT VALVES & ACCESSORIES



05 FIRE HOSE REEL DRUM & ACCESSORIES



06 FIRE EXTINGUISHER





# OUR PRODUCTS

## 07 FIRE EXTINGUISHER ACCESSORIES



## 08 FIRE EXTINGUISHING AGENTS



## 09 FIRE SPRINKLERS



## 10 PTFE TEFLON TAPE



## 11 CONVENTIONAL FIRE ALARM SYSTEM



## 12 STANDALONE ALARM SYSTEM



# 01 HOSE PIPE



**THERMOPLASTIC FIRE HOSE**

- ISI marked (IS:12585)
- Available in Red and Black colour.
- Non-crackable
- Both ends sealed for puncture-free test
- Kink, Abrasion & Flame Resistant
- Excellent Pressure Sustainability
- Anti Ageing & Non-Corrosive
- Puncture & Crush Resistant
- Non-sticky even in hot weather
- Aesthetically Appealing
- Recyclable, so Eco-friendly
- Lightweight – easy to use
- Lesser load on Hose Reel Drum



**PVC STEEL WIRE  
REINFORCED HOSE**

- Tube: Strong very flexible and smooth, non tox, transparent PVC hose
- reinforcement: Shock resistant galvanised steel spiral wire
- Working Temp: -5 to 65 degree celsius
- Widely used in Industrial, Construction and Environmental protection equipment, Civil Engineering, Wharf, Oil Depot, Sanitation lines and other fields.
- Used for drawing and conveying water, oil, powder, granules and many more purposes.





### NON-PERCOLATING FLEXIBLE FIRE HOSE TYPE 3/ TYPE B

- SIZE: 63MM
- Type 3/Type B
- Available with and without coupling
- Available in 7.5, 15, 30 meters
- Available with SS, Aluminium or Gunmetal Coupling
- ISI Approved IS 636
- Material: Rubberized Fabric Reinforced Rubber lined (RRL) – Elastomeric Outer Covering
- Workability: Can work at certified pressures as lab-tested on calibrated machines



### MANXPOWER RED HOSE

- Application
- Used for Agriculture.
- Used in Chemical industries, mines, factories and much more
- Heavy duty industrial use
- Color: Red
- Working Pressure: 6 Bar
- Size :2.5" & 3"



### NON-PERCOLATING FLEXIBLE FIRE HOSE TYPE 1/ TYPE A

- Size: 63MM
- Type 1/Type A
- Available with and without coupling
- Available in 7.5, 15, 30 meters
- Available with SS, Aluminium or Gunmetal Coupling
- ISI Approved IS 636
- Rubberized Fabric Reinforced Rubber lined (RRL) Woven-Jacketed



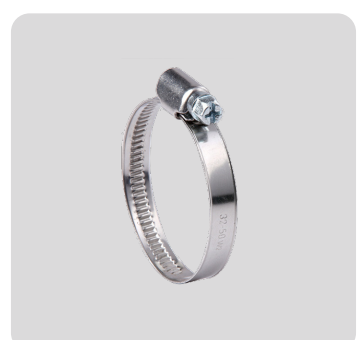
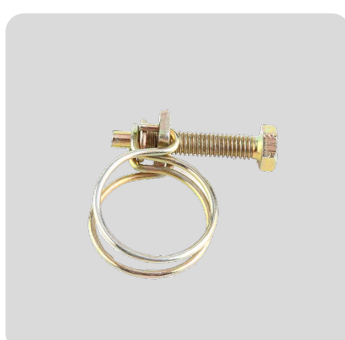
### MANXPOWER CANVAS HOSE

Used for water delivery purposes in Agriculture, Chemical Industries, Mines, Factories and much more.

- Outside Jacket made of
- Polyester yarn and Synthetic yarn;
- Available in sizes ID: 1"-10"
- Working Pressure: 6-8 Bar; 8-10 Bar; 13 Bar

# 02 HOSE CLAMPS

A hose clamp, hose clip, hose lock or Jubilee clip is a device used to attach and seal a hose onto a fitting such as a barb or nipple. Comes in various sizes ranging from 1/2" to 50" and above. Our Hose clamps are made of high quality Mild Steel / Stainless Steel material. Hence, ensuring our customers gets high quality products at reasonable prices.





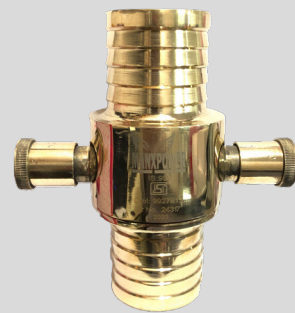
# 03 COUPLING & BRANCH PIPES



## FIRE HOSE BRANCH PIPE WITH NOZZLE

Aluminium Stainless steel Gunmetal

- Size: 63mm (2.5")
- Available in Aluminium, Stainless Steel, Gunmetal
- ISI Approved IS 903
- Hydraulic Test: 21 Kg/cm<sup>2</sup>
- Finish: Natural Polished



## FIRE HOSE COUPLING

Aluminium Stainless steel Gunmetal

- Size: 63mm (2.5")
- Available in Aluminium, Stainless Steel, Gunmetal
- ISI Approved IS 903
- Hydraulic Test: 21 Kg/cm<sup>2</sup>
- Finish: Natural Polished

# 04 HYDRANT VALVES & ACCESSORIES



## SINGLE HEAD LANDING VALVE

- Landing Valves are used to be mounted in Fire Hydrant System for Internal or External places. ;
- Stainless Steel Material; Gun metal
- ISI APPROVED TYPE-A, IS:5290; Size: 63 mm female outlet;
- Tested at 21 kgf/cm<sup>2</sup>



## STAINLESS STEEL ADAPTOR

- Stainless Steel
- Adaptor for 63mm Landing Valves
- Brand: MANXPOWER
- Tested at 21 kgf/cm<sup>2</sup>



## FOUR WAY BREECHING INLET

- Brand: MANXPOWER
- Body: Cast Iron
- NRV: Stainless Steel
- Test Pressure: 21 kgf/cm<sup>2</sup>
- Inlet: 4 X 63mm NRV Male Instantaneous



## TWO WAY BREECHING INLET

- Brand: MANXPOWER
- Body: Cast Iron
- NRV: Stainless Steel
- Test Pressure: 21 kgf/cm<sup>2</sup>
- Inlet: 2 X 63mm NRV Male Instantaneous



# 05 FIRE HOSE REEL DRUM & ACCESSORIES



## FIRE HOSE REEL DRUM

- MANXPOWER Fire Hose Reel Drum
- Two-piece
- Suitable for 19/20 MM Hose
- Manual swing fire hose reel
- Corrosion-free waterways
- High Quality; ISO, CE Certified



## MALAYSIAN TYPE DRUM

- MANXPOWER Fire Hose Reel Drum
- Malaysian Type
- Aluminium alloy, Corrosion-free waterways
- Suitable for 19/20 MM Hose
- Manual swing fire hose reel
- High Quality; ISO, CE, BS EN 671-1 Certified



## MANXPOWER PVC SHUT OFF NOZZLE

- MANXPOWER PVC Shut Off Nozzle
- Suitable for 19/20 MM Hose
- Corrosion Free
- High Quality; CE, ISO Certified
- Leak Proof

**Big or small,  
Fire safety is for all.**



# 06 FIRE EXTINGUISHER

## ABC TYPE FIRE EXTINGUISHER

Size: 1kg 2kg 4kg 6kg 9kg

- ABC Type Fire Extinguisher (Stored Pressure)
- Filled with MAP 50 ABC Dry Chemical Powder
- Portable Fire Extinguisher, Easy to use and refillable
- Suitable for class A, B, C and Electrically Started Fire
- ISI Approved as per IS 15683, ISO, CE Approved
- Min. Discharge Time: 8 Seconds
- Working Temperature: -10 to 60 degrees Celsius
- Available in sizes: 1, 2, 4, 6, 9kg



## CO2 FIRE EXTINGUISHER

- Co2 Type Fire Extinguisher (Stored Pressure)
- Filled with Carbon Dioxide
- Portable fire extinguisher
- Easy to use; Suitable for class B, C and electrically started Fire
- ISI Approved as per IS 15683, PESO, CE, ISO Approved
- min. discharge time: 8 Seconds
- Working Temperature: -10 to 60 degrees celsius
- Available in Sizes: 2 kg, 4.5 kg



## AFFF FOAM FIRE EXTINGUISHER

- AFFF Foam Based Fire Extinguisher (Stored Pressure)
- Filled with Mechanical AFFF Foam
- Min. Discharge time: 8 seconds
- Working Temperature: 5 to 60 degree celsius
- Available in 9 liter
- Foam Fire Extinguishers are useful for Class 'A' & Class 'B' fires involving flammable liquids such as Paints, Solvents and fats like Grease and Oils. It contains Aqueous Film Forming Foam (AFFF) compound. The foam smothers the flames and forms a compact blanket over the fire, preventing it from spreading or re-igniting



## 500 GM ABC TYPE FIRE EXTINGUISHER

- 500 GM fire extinguisher
- Filled with MAP 50 ABC Dry Chemical powder
- Stored pressure
- ABC Dry Chemical Powder
- ISO, CE Approved
- Portable Fire Extinguisher
- Easy to use, refillable; Effective against class A, B,C AND Electrically started fires;
- Easy to store with wall mount bracket.
- High quality.



## FIRE EXTINGUISHER BALL

- MANXPOWER Brand
- 1.3 kg ABC powder used
- Filled with MAP 90 ABC powder
- Diameter 150mm
- Activation time : 3-5 seconds approx.
- Effective Area: 3 cubic meters approx.
- Light weight
- Easy to use
- Human and Environment friendly
- No maintenance required
- 5yrs Shelf Life



## WATER BASED FIRE EXTINGUISHER

- Water-based extinguishers harness the power of water to extinguish fires. It is the most effective extinguishing agent against fires in solid objects such as wood. Such fires remain hidden deep within the objects, increasing in temperature till they cause the surrounding material to spontaneously ignite.
- Soft water-based fire extinguisher (stored pressure)
- Portable fire extinguisher
- Easy to use
- Min. discharge time: 8 seconds
- Working temperature: 5 to 60 degrees celsius
- Available in 9 litre



## FIRE BLANKET

- Brand: MANXPOWER
- Size: 1x2m
- Excellent flame retardant property
- Easy to carry and use
- Environment friendly, cause no secondary pollution after use
- No expiry date, can be used multiple times if there is no damage



# 07 FIRE EXTINGUISHER ACCESSORIES



**ABC VALVE**

- ABC Valve for Fire extinguisher
- Brass Body
- Neck ring size M30X1.5
- Available in Black Color



**ABC VALVE  
SMALL HANDLE**

- Small Handle ABC Valve for Fire extinguisher
- Brass Body
- Neck ring size M30X1.5
- Available in Black Color



**FIRE EXTINGUISHER  
EMPTY BODY**

- High quality Powder Coated Fire Extinguisher Empty Body
- Available in sizes: 0.5kg, 1 kg, 2 kg, 4 kg, 6kg, 9kg
- Pressure Tested



**SPRING PRESSURE  
GAUGE**



**37MM SPRING  
PRESSURE GAUGE**



**DIAPHRAGM PRES-  
SURE GAUGE**



**FIRE EXTINGUISHER  
DISCHARGE HOSE**



**CE ABC VALVE**



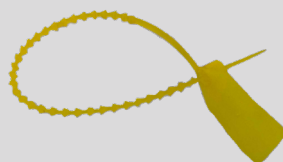
**SYPHON TUBE**

- Fire Extinguisher Syphon tube available for 0.5, 1, 2, 4, 6, 9kg Fire Extinguishers
- ensures smooth flow of ABC Powder



**FIRE EXTINGUISHER  
BELT**

- Fire Extinguisher Belt for 4 Kg, 6 Kg, 9 Kg Fire Extinguisher



**PLASTIC SEAL FOR  
FIRE EXTINGUISHER**

- Plastic seal for fire extinguisher; made with high quality PVC granules



**MODULAR VALVE**

# 08 FIRE EXTINGUISHER AGENTS



## ABC DRY CHEMICAL POWDER (25KG)

- ABC Dry Chemical Powder
- mono ammonium phosphate-based powders are multipurpose and are generally used for Class A B C and Electrically started Fires
- Packing: 25kgs Bag
- Available in MAP 30, 50, 90
- CE Certified

# 09 FIRE SPRINKLER



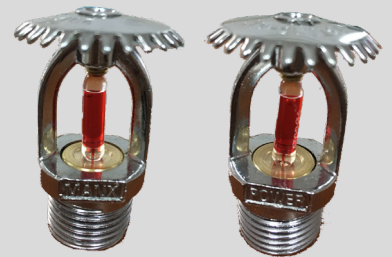
## PENDENT TYPE FIRE SPRINKLER

- Size: 1/2"
- 57, 68, 79 Degree Bulb
- Standard Response
- Chrome Plated, Available in Zinc Alloy, brass.



## SIDEWALL TYPE FIRE SPRINKLER

- Size: 1/2"
- 57, 68, 79 Degree Bulb
- Standard Response
- Chrome Plated, Available in Zinc Alloy and Brass



## UPRIGHT TYPE FIRE SPRINKLER

- Brand: MANXPOWER
- Size: 1/2"
- 68 Degree Bulb
- Standard Response
- Chrome Plated, Available in Zinc Alloy
- Material: Zinc



## CONCEALED TYPE FIRE SPRINKLER

- Brand: MANXPOWER
- Material: Brass
- Temperature: 68° C
- Size: 1/2"
- Pack of 100 pcs



## MEDIUM VELOCITY NOZZLE

- Brand: MANXPOWER
- Size: 1/2"
- K Factor – 30
- Chrome Plated
- Material: Brass



# 10 PTFE TEFLON



## PTFE TEFLON TAPE

12mm 19mm

- Width: 12mm and 19mm
- Length: 10 meters
- Thickness: 0.075mm
- Brand: MANXPOWER
- Available in Yellow and White Color



## PTFE TEFLON TAPE (8METER)

- Width: 12mm
- Length: 8 meters
- Thickness: 0.075mm
- Brand: Dragon
- Available in Yellow and White Color



## PTFE TEFLON TAPE (12METER)

- Width: 12mm
- Length: 12 meters
- Thickness: 0.075mm
- Brand: Dragon
- Available in White Color



## PTFE TEFLON TAPE (10METER)

- Width: 12mm
- Length: 10 meters
- Thickness: 0.1mm
- Brand: Dragon
- Available in White Color

# 11 CONVENTIONAL FIRE ALARM SYSTEM



**SMOKE DETECTOR**



**HEAT DETECTOR**



**MULTI DETECTOR**



**FIRE ALARM PANELS**



**FIRE STROBE SIREN**



**FIRE STROBE SIREN  
ECONOMY**



**MANUAL CALL  
POINT**



**MANUAL CALL POINT  
ECO**

# 12 STANDALONE ALARM SYSTEM



## STANDALONE SMOKE DETECTOR

- Model: YJ-168
- Sensor: Photoelectric
- Power: DC 9V Battery (battery is included)
- Low Power Indicate: Audiovisual Alarm "7-15minutes)
- Alarm Sensitivity: 0.1~0.5dB/M
- Alarm Current:  $\leq 15\text{mA}$
- Alarm Output: Audiovisual Alarm , 85db/10 feet
- Working Environment: Operation Temperature-1" +55", Operation Humidity: <95%



## STANDALONE SMOKE DETECTOR GOLD

- Model: YJ-101
- Sensor: Photoelectric
- Power: DC 2\*1.5V AA Battery (batteries are included, 1 year battery life)
- Low Power Indicate: Audiovisual Alarm "7-15minutes)
- Alarm Sensitivity: 0.1~0.25dB/M
- Alarm Current:  $0 \leq 15\text{mA}$
- Alarm Output: Audiovisual Alarm , 85db/10 feet
- Working Environment: Operation Temperature-10" +55", Operation Humidity: <95%



## STANDALONE SMOKE DETECTOR PLUS

- Model: YJ-106
- Sensor: Photoelectric
- Power: DC 9V Battery (battery is included, 1 year battery life)
- Low Power Indicate: Audiovisual Alarm "7-15minutes)
- Alarm Sensitivity: 0.1~0.25dB/M
- Alarm Current:  $\leq 15\text{mA}$
- Alarm Output: Audiovisual Alarm , 85db/10 feet
- Dimension: 102\*46mm





## STANDALONE SMOKE DETECTOR-WIFI

- Model: YJ-101B-Wifi
- Sensor: Photoelectric
- Power: DC 2\*1.5V AA Battery (batteries are included, 1 year battery life)
- Low Power Indicate: Audio-visual Alarm 7-15 minutes
- Alarm Sensitivity: 0.1~0.25dB/M
- Alarm Current:  $0 \leq 15\text{mA}$
- Alarm Output: Audio-visual Alarm, 85db/10 feet
- Working Environment: Operation Temperature -10" +55", Operation Humidity: <95%



## GAS DETECTOR

- Model: YJ-611
- Voltage: 100-240V AC
- Sensor: Semiconductor Sensor
- Rated Power: 2.5W
- Alarm Output: Audio-visual Alarm
- Sound Level: 85db/10 feet
- Alarm Level: LPG & Natural Gas: 10%  $\pm$  5% LEL
- Dimension: 120\*80\*35mm



## CO DETECTOR

- Model: YJ-812
- Sensor: Electrochemical CO sensor
- Battery Life: 1 year
- Standby Current:  $\leq 10\mu\text{A}$
- Alarm Current:  $\leq 25\text{mA}$
- Alarm Output: Audiovisual alarm
- Sound Level: 85db/10 feet
- Alarm Level: 50ppm, alarm within 60-90 minutes; 100ppm, alarms within 10-40 minutes; 300ppm, alarms within 3 minutes.



## BURGLAR ALARM

- Working voltage: 3V(AAA battery\*2)
- Working current: 19-59mA
- Standby current:  $\leq 35\mu\text{A}$
- Network: WIFI(802.11b/g/n)
- Wifi transmission distance: 30M(open space)
- Installation distance:  $\leq 2\text{CM}$
- Triggering distance: 2~3CM



**SHOP NOW AT**

**[www.manximpex.com](http://www.manximpex.com)**

Big Or Small, Fire Safety Is For All.



**DRAGON  
TEFLON TAPE**

**TAIWAN  
HOSE CLAMPS**

Mobile: +91 74281 15550

Office: +91 11-49872937

Email: [info@manximpex.com](mailto:info@manximpex.com)

Website: [manximpex.com](http://manximpex.com)

Address: 3963/9, Ground Floor, City Market,  
Ajmeri Gate, Delhi, India 110006